

PERGOLAN CATALOG

Premium Design & Financial Solution



PERGOLOAN

WWW.PERGOLOAN.COM

TABLE OF CONTENTS

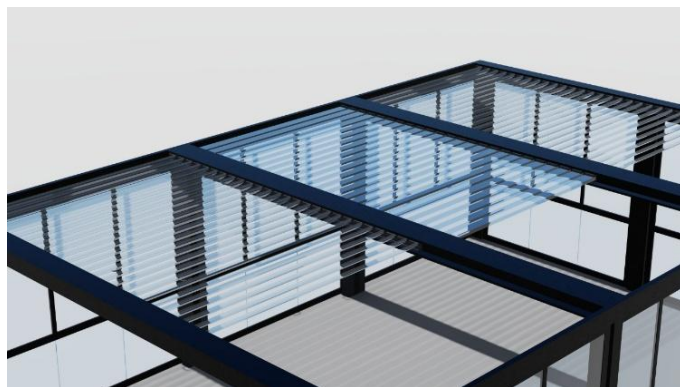
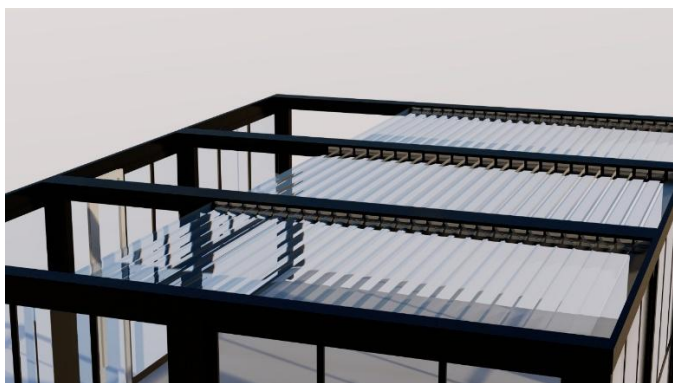
- 01. Glass Louvered Pergola
- 02. Dynamic Sky Pergola
- 03. Grande Sunroom
- 04. Guillotine Windows
- 05. Half and Half Windows
- 06. Lift and Slide Doors
- 07. Bi-Fold Doors
- 08. Motorized Zip Screens
- 09. Pool Coverings
- 10. Sliding Glass Doors
- 11. Sukkah
- 12. Swing Doors
- 13. Vinyl Pergola
- 14. Wavy Pergola
- 15. Wind Break Railings





Glass Louvered Pergola

Similar to our Aluminum Louvered Pergola, the Glass Louvered Pergola is designed for upscale outdoor seating and lounging. Featuring an aluminum frame and glass louver blades, it is engineered to withstand strong winds and heavy snow loads, making it a durable and stylish choice for year-round use.





Dynamic Sky Pergola

The Retractable Glass Sunroom can be installed with either a pitched or flat configuration, adapting seamlessly to various architectural styles. It's the perfect choice for clients who desire the open, sunlit feel of a traditional sunroom, combined with the flexibility and modern design of a pergola.

Our retractable glass sunrooms are completely watertight and engineered to withstand harsh weather conditions, ensuring comfort and protection throughout the year. They expand your living space and create a refined outdoor room designed for relaxation, leisure, and elegant gatherings.

Call (551) 419-2520
info@pergoloan.com
www.pergoloan.com

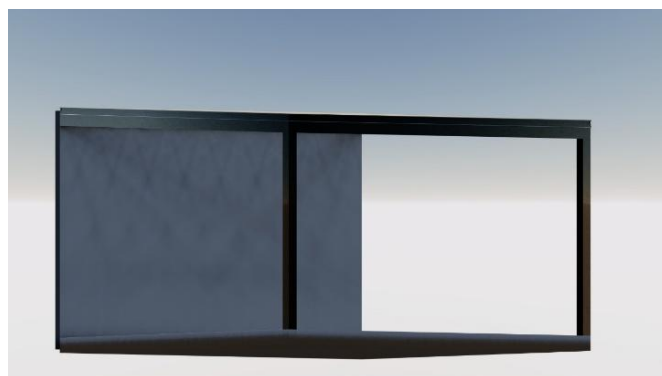
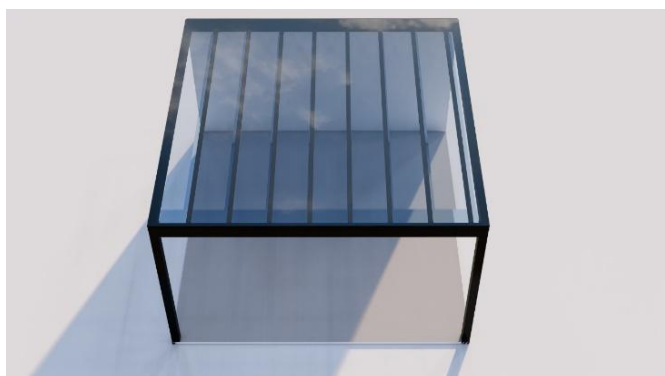




Grande Sunroom

Elevate your outdoor living experience with our elegant Grande Fixed Glass Sunroom. Thoughtfully designed to blend seamlessly with your surroundings, it offers a bright, inviting, and stylish space that can be enjoyed throughout the year.

Crafted with premium materials and precision engineering, the Grande Sunroom delivers lasting durability, comfort, and modern sophistication. Transform any outdoor area into a captivating environment — perfect for relaxation, gatherings, or simply basking in natural light within a protected setting.





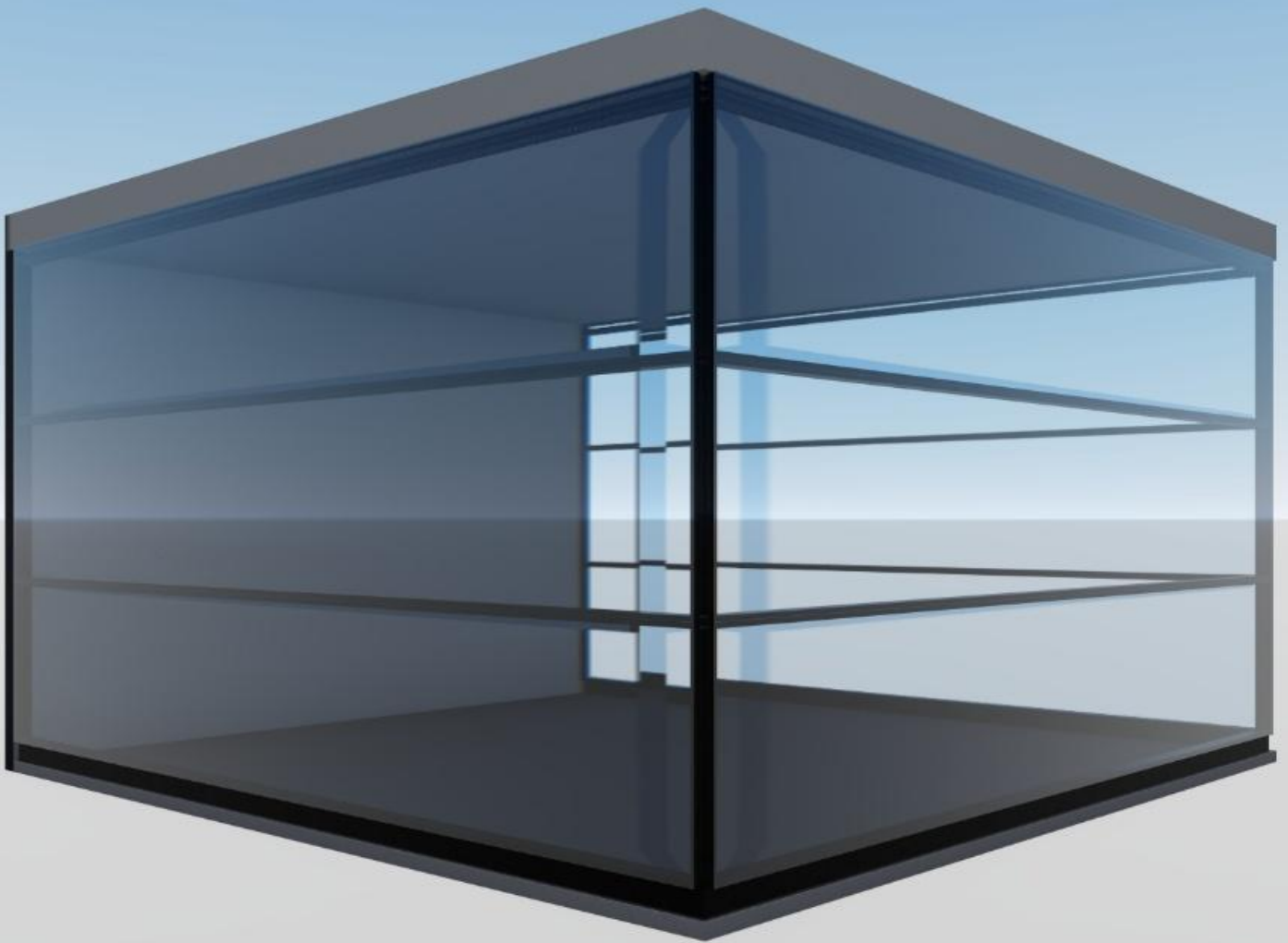
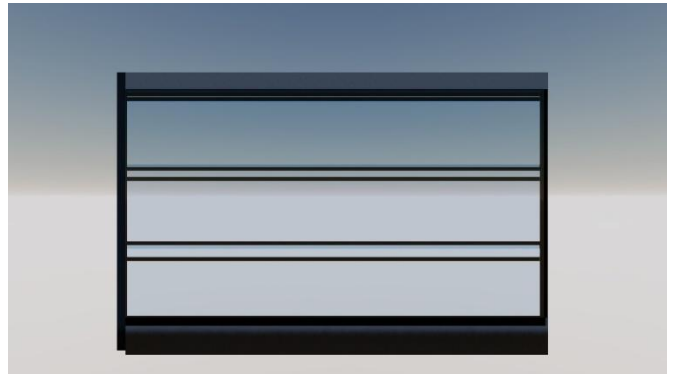
Guillotine Windows

Our remote-controlled Motorized Guillotine Windows are the perfect choice for restaurants, terraces, patios, backyards, and stylish indoor partitions. Built with thermally insulated aluminum profiles and double-glazed panels, they provide exceptional heat, air, and sound insulation when fully closed.

Designed similarly to a reverse garage door, the bottom panel remains fixed while the upper panels glide smoothly up and down, giving you complete control over natural light, airflow, and panoramic views. The system's sleek motion and premium construction ensure comfort and elegance in every season.

The **Pergoloan Guillotine Window System** transforms your pergola or outdoor area into a luxurious year-round retreat. Enjoy effortless adjustments and precise positioning to create the perfect atmosphere for any occasion. When lowered, the windows function as a stylish and secure railing, combining safety with contemporary design.

Meticulously engineered with attention to every detail, this motorized solution delivers exceptional durability, superior performance, and timeless sophistication — a truly valuable addition to any modern outdoor space.

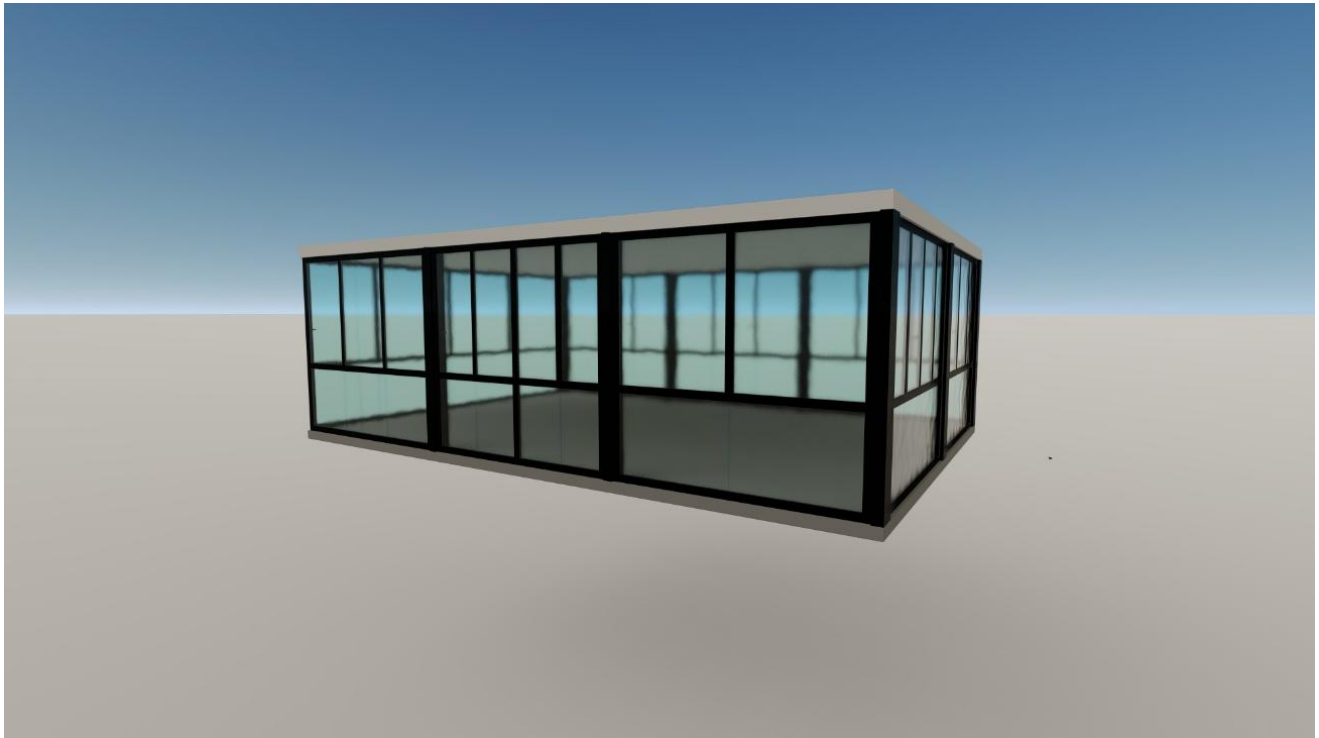


Half and Half Windows

The *Half & Half* system combines a fixed bottom panel with a sliding glass top, creating a secure, functional, and contemporary solution. The fixed lower section acts as a perimeter railing, perfect for terraces, pergolas, or any area where maintaining visibility and safety is essential.

Designed for clients who appreciate the open feel and modern look of sliding glass doors but prefer added protection for children or pets, the *Half & Half* system provides the perfect balance between style and safety.

With its sleek design and smooth sliding mechanism, this system delivers effortless operation, lasting durability, and a refined aesthetic that enhances both indoor and outdoor living spaces.





Lift and Slide Doors

Typically used in modern homes, our *Lift & Slide* doors feature large glass panels that open smoothly from the center, creating a seamless connection between indoor and outdoor living areas.

The lift-and-slide mechanism allows the panels to glide effortlessly and silently, even at larger sizes. With double glazing and superior thermal insulation, these doors provide comfort, energy efficiency, and an elegant contemporary look.

Perfect for integration with pergolas or open social spaces, *Lift & Slide* doors bring natural light, spaciousness, and refined style to any home environment.



Bi-Fold Doors

A modern evolution of the classic sliding door, our *Bi-Fold* doors feature an elegant accordion-style design that maximizes space, airflow, and comfort.

Commonly used in commercial spaces and restaurants, these doors fold smoothly to the sides, opening up entire walls and creating a seamless connection between indoor and outdoor areas.

Perfect for pergola integrations and open architectural concepts, *Bi-Fold* doors deliver natural ventilation, a sense of openness, and contemporary elegance — making them an exceptional addition to any commercial or outdoor project.



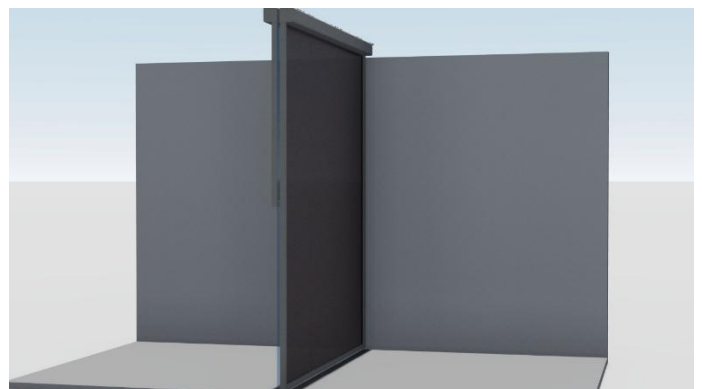
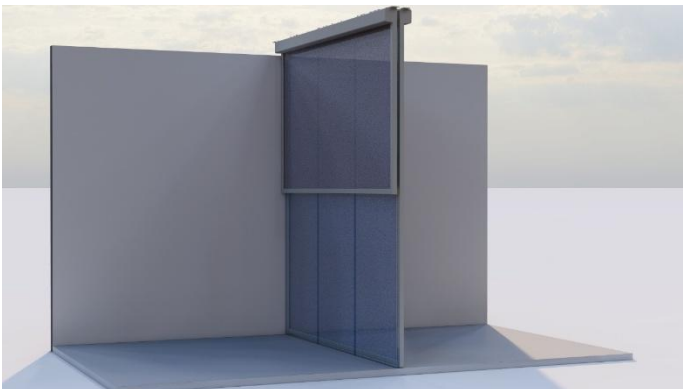
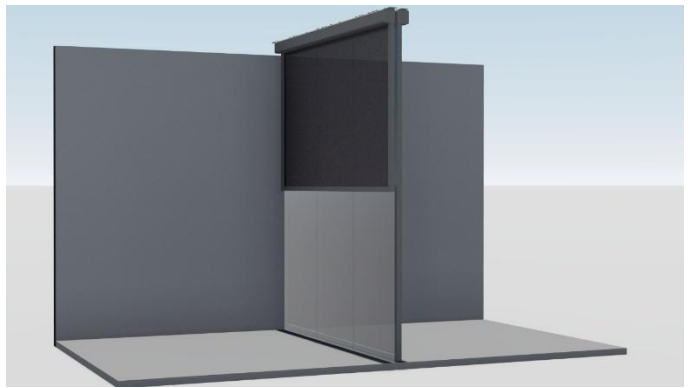
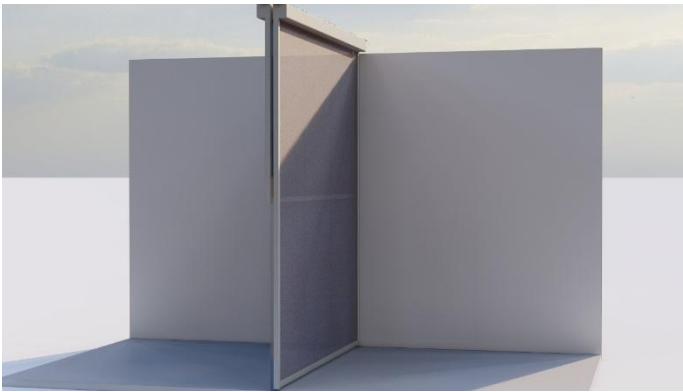
Motorized Zip Screens

Our *Motorized ZipScreen* systems function as sophisticated outdoor shades that deliver privacy and protection from sun, heat, wind, rain, and insects. Designed to complement any Pergoloan pergola, they fully enclose your patio, balcony, or terrace, and can be operated either manually or with a remote control.

Engineered to withstand winds up to 50 mph, *ZipScreens* provide micro air circulation and water resistance while maintaining a sleek, integrated appearance. Their refined design enhances both the comfort and visual appeal of your outdoor space, creating a stylish and sheltered environment year-round.

Choose from a wide selection of fabrics, colors, and opacities to customize your desired level of shade, visibility, and privacy. Enjoy unobstructed views while staying protected from insects and harsh weather.

Meticulously crafted with attention to every detail, the *ZipScreen* system combines durability, performance, and elegance — elevating your outdoor living experience with the perfect balance of style, convenience, and comfort, tailored for your Pergoloan pergola system.



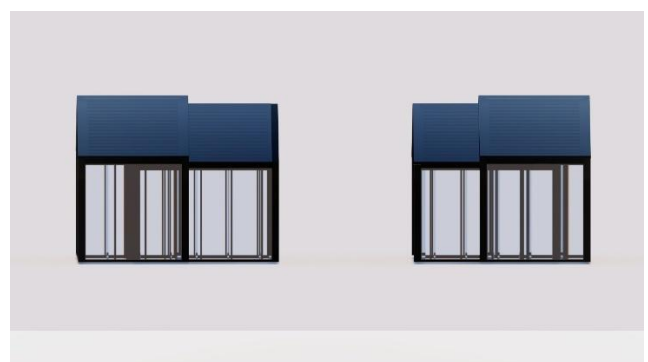


Pool Coverings

Our *Pool Coverings* are designed for clients who wish to enjoy the summer in comfort and style, while maintaining the elegant aesthetic of their outdoor space. These structures provide effective heat reduction and shade, creating a pleasant atmosphere without disrupting the visual harmony of your landscape.

When integrated with a Pergoloan system, your pool area becomes a versatile oasis — blending the freedom of the outdoors with the comfort of an indoor environment. Perfect for swimming, relaxing, or entertaining, all year round.

Crafted from durable, high-quality materials and finished with modern design details, our *Pool Coverings* deliver sophistication, protection, and a touch of luxury to your outdoor living experience.





Sliding Glass Doors

Our Sliding Glass Doors are available in both single- and double-pane configurations, featuring options for thermal insulation, noise reduction, and double glazing. The single-pane frameless version offers a sleek, minimalist aesthetic, while the double-pane framed version ensures superior insulation and energy efficiency.

Seamlessly integrating with any Pergoloan pergola or sunroom system, GlideGlass Premier Doors glide effortlessly, creating a harmonious connection between indoor and outdoor spaces. Crafted from tempered safety glass, they combine elegance and functionality to deliver a bright, secure, and comfortable environment.

Technical Features & Advantages

Four Layers of Insulation

Our double-glazed system provides up to **4.4 times more insulation** compared to single glass, thanks to advanced insulating technology. This ensures cooler interiors in summer and warmer comfort in winter, enhancing year-round efficiency.

Special Water Drainage System

The base rail features a precision-engineered drainage channel and deflection blades that

effectively direct any water out through dedicated drain holes, keeping your area dry and protected.

Effortless Opening & Closing

Panels up to **1.5 meters wide** maintain panoramic views while moving smoothly along the rail. The precision wheel assembly allows for seamless, quiet gliding even with heavy glass panels.

Locking System Options

Choose between two secure and stylish options: the **espagnolette lock** or the **hook mortise lock**, both designed for ease of use and enhanced protection.

Glass Type Options

GlideGlass offers three glass thicknesses — **8 mm, 10 mm, and 4+10+4 mm** — to suit your specific insulation and design needs.

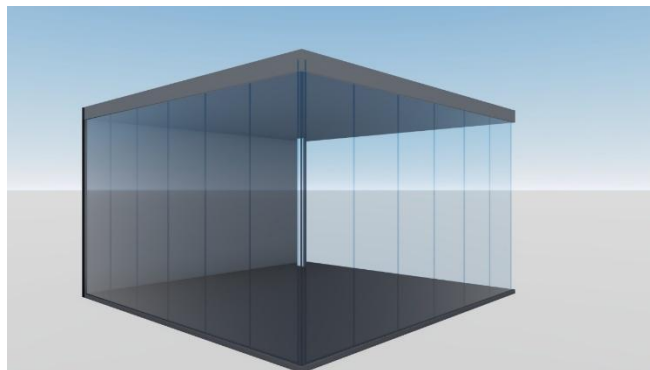
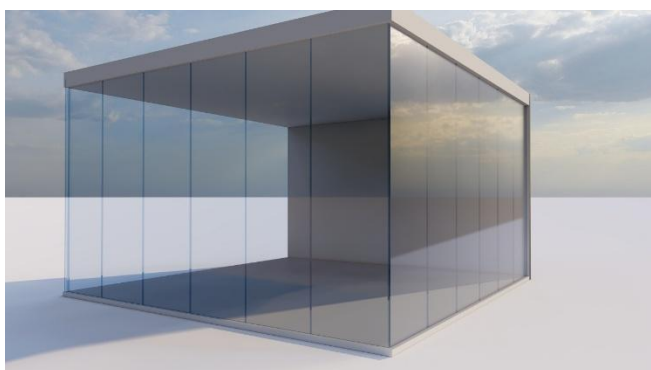
Stainless Steel Components

All bearing and accessory sets are **anti-corrosion stainless steel**, ensuring long-lasting performance and durability even in outdoor or coastal environments.

High-Capacity Carrier System

Each suspension wheel supports up to **120 kg per panel**, with stainless steel bearings that glide effortlessly along the track. Height adjustments are simple, providing smooth operation with minimal friction and noise.

With *GlideGlass Premier Sliding Glass Doors*, elevate your outdoor experience to new levels of luxury, combining precision engineering, timeless design, and effortless performance.



Sukkah

Celebrate Sukkot with ease and elegance through our **Pergola Vision Sukkah System** — a seamless fusion of modern design and timeless tradition. Engineered for versatility, our **motorized vinyl pergolas** can be easily converted into a **Sukkah** with the manual option, allowing for full **Schach** application while maintaining weather protection and comfort.

Designed to meet **halachic standards**, each system has been **reviewed and certified by our in-house Rabbi** and is fully **kosher for Sukkot**. Our **Shabbat-friendly** pergolas can operate manually or connect to **smart devices and rain sensors** for year-round functionality.

Experience the spirit of Sukkot like never before — gather under the open sky, surrounded by loved ones, and create lasting memories of joy and unity. With **retractable and louvered systems**, you can effortlessly adjust your pergola for shade, airflow, or a complete open-roof Sukkah experience.

Crafted for both **spiritual fulfillment and architectural beauty**, our Sukkah Pergolas let you honor the mitzvah while elevating your outdoor lifestyle.



Swing Doors

Our **Swing Doors** offer a seamless and functional passage through your pergola or enclosure system. Designed for versatility, each **3-foot panel** is **fully customizable** to match your project's aesthetic and structural needs.

Available in **single or double configurations**, these doors can **open inward or outward**, providing flexible access solutions for both residential and commercial applications.

Crafted with **premium materials and precision hardware**, our swing doors ensure **smooth operation, reliable security**, and long-lasting performance. Whether integrated into a pergola, sunroom, or glass enclosure, they combine **refined style with everyday practicality**.



Vinyl Pergola

Experience the perfect blend of innovation, style, and durability with our **Vinyl Retractable Pergola** — a true **three-season outdoor solution** designed to thrive in both warm and rainy climates.

Available in **motorized or manual configurations**, this system offers effortless control over your environment, allowing you to transition seamlessly between open-air freedom and sheltered comfort.

Constructed from **high-performance vinyl** with **exceptional UV resistance**, it provides superior protection from sun and weather while maintaining a sleek, contemporary aesthetic. The **retractable canopy system** ensures smooth operation, adapting instantly to shifting conditions and enhancing your comfort at any time of day.

With its **robust weatherproof build** and **refined design**, the Vinyl Pergola harmoniously complements any architectural style—whether residential, commercial, or hospitality. Enjoy the luxury of choice: operate with a **remote control** for effortless automation or opt for **manual functionality** for direct, reliable performance.

Redefine your outdoor living experience with the **Vinyl Retractable Pergola**, where sophistication meets resilience in every detail.

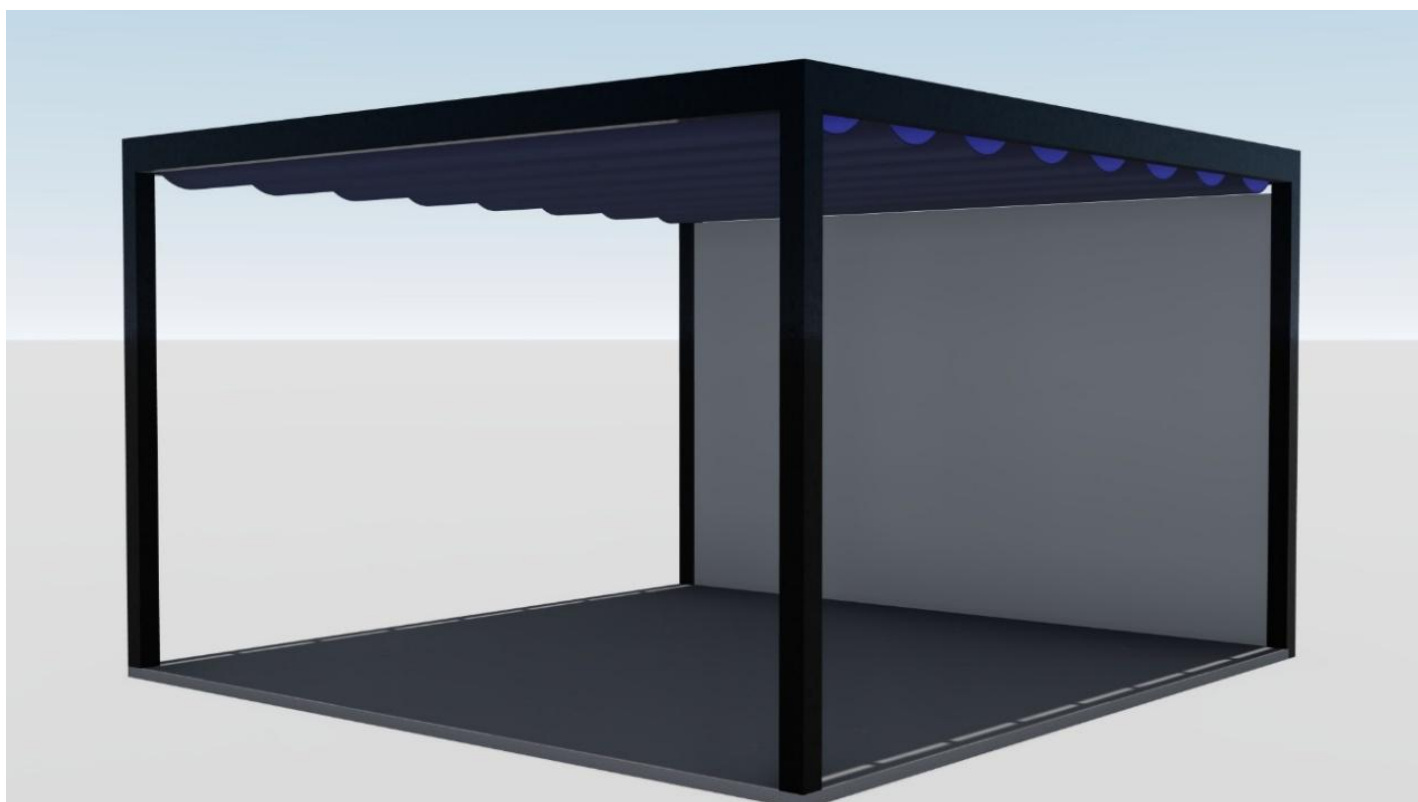


Wavy Pergola

Similar to our Vinyl Pergola, the **Wavy Pergola** features a flat, wavy vinyl roof designed for comfort and durability in warmer climates. Available in both **manual and motorized configurations**, it provides full flexibility to suit your outdoor living needs.

Perfect for clients seeking a roof without a pitch, the Wavy Pergola allows you to enjoy the feeling of an **open sky** while maintaining protection from sun and heat.

Crafted from **weather-resistant and UV-protected materials**, this pergola ensures long-lasting performance and a sleek, contemporary aesthetic. Whether for residential, commercial, or terrace spaces, the Wavy Pergola combines outdoor freedom with elegance, creating a refined and comfortable environment.





Wind Break Railings

Our **Wind Break Railings** are glass perimeter systems designed for decks, balconies, and pergolas, providing both **safety and style**. These railings protect against wind while enhancing the overall functionality and aesthetic appeal of any outdoor space.

Available in **clear or tinted glass**, they offer customizable options that seamlessly complement your design, maintaining unobstructed views while providing protection and comfort.

Crafted from **high-quality, durable materials**, Wind Break Railings deliver long-lasting performance, safety, and a refined finish that elevates any terrace, balcony, or pergola project to a new level of sophistication.

Call (551) 419-2520
info@pergoloan.com
www.pergoloan.com





PERGOLOAN

Designed by FasteryDev LLC

www.pregoloan.com